

## 1. Start Guide

### 1.1 Accessories



### 1.2 Main Functions

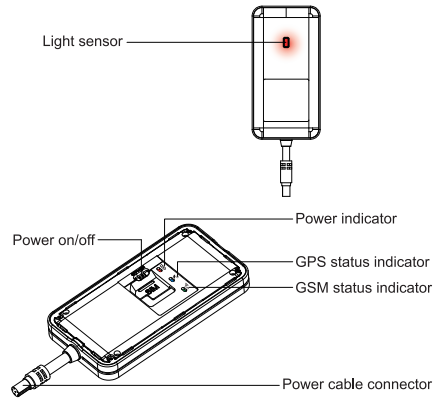
- Real-time tracking
- Vibration/Displacement/Low battery/Power off alert
- ACC detection
- History playback
- Geo-fence
- OTA update
- Remotely control electricity/oil
- Tamper alert
- External voltage detection

### 1.3 Specifications

Communication system	WCDMA/GSM
Frequency	WCDMA 850/900/1900/2100 MHz GSM 850/900/1800/1900 MHz
Operating Voltage	9-36VDC
Location Time	Cold Start: <35s (open sky) Hot Start: <2s (open sky)
Location Accuracy	<10 meters
Operating Temperature	-20℃ → +70℃
Dimension	85.0(L) x 45(W) x 13(H) mm
Weight	60g

## 2. My device

### 2.1 Appearance



### 2.2 LED indicators

GPS LED Indicator - Blue	
Flashing (interval 0.1s)	Searching BD/GPS signal
Solid blue	BD/GPS positioned
OFF	GPS sleep or off

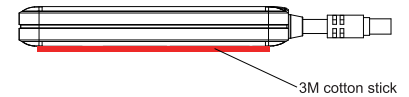
GSM LED Indicator - Green	
Quick flashing	GSM initializing
Slow flashing	Receive GSM signal normally
Solid green	Connected to GPRS network
OFF	No GSM signal or SIM card

Power Status - Red	
Flashing	Low battery
Slow flashing	Full charge/Work normally
Solid Red	Charging
OFF	Low battery/Power off

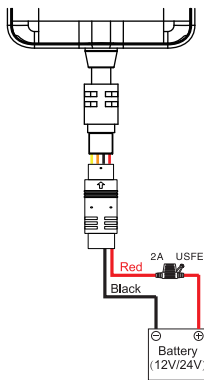
## 3. Installation

### 3.1 Installation position

1. Please install the device upwards (LED indicators facing upward).
2. If the windshield has been pasted by lagging and heating, GPS signals will be weakened, which may results in abnormal GPS work, so please change GPS tracker installation position.



### 3.2 Wiring configuration

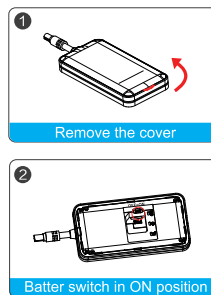


- 1) The standard power supply ranges from 9V to 36VDC. Please use the power cord from original factory. Red line means positive side while black line means negative side. During installation, negative side should connect to the ground.
- 2) To track engine run time, connect orange wire to ignition.

## Operation of device

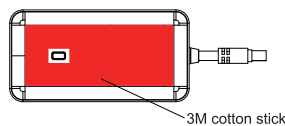
### Power on

Remove the cover, turn on battery (switch is in ON position, internal power starts and device power on. The internal power is used when external power is cut off) and connect the external power, you will see power indicator lights up and begin to supply power.



### 5.2 Power off

To power off the device, cut off external power first and remove the front cover to move the battery switch to OFF. Power indicator is OFF and battery charging stops the moment device turned off.



Logistimatics support:  
336-663-1583  
hello@logistimatics.com